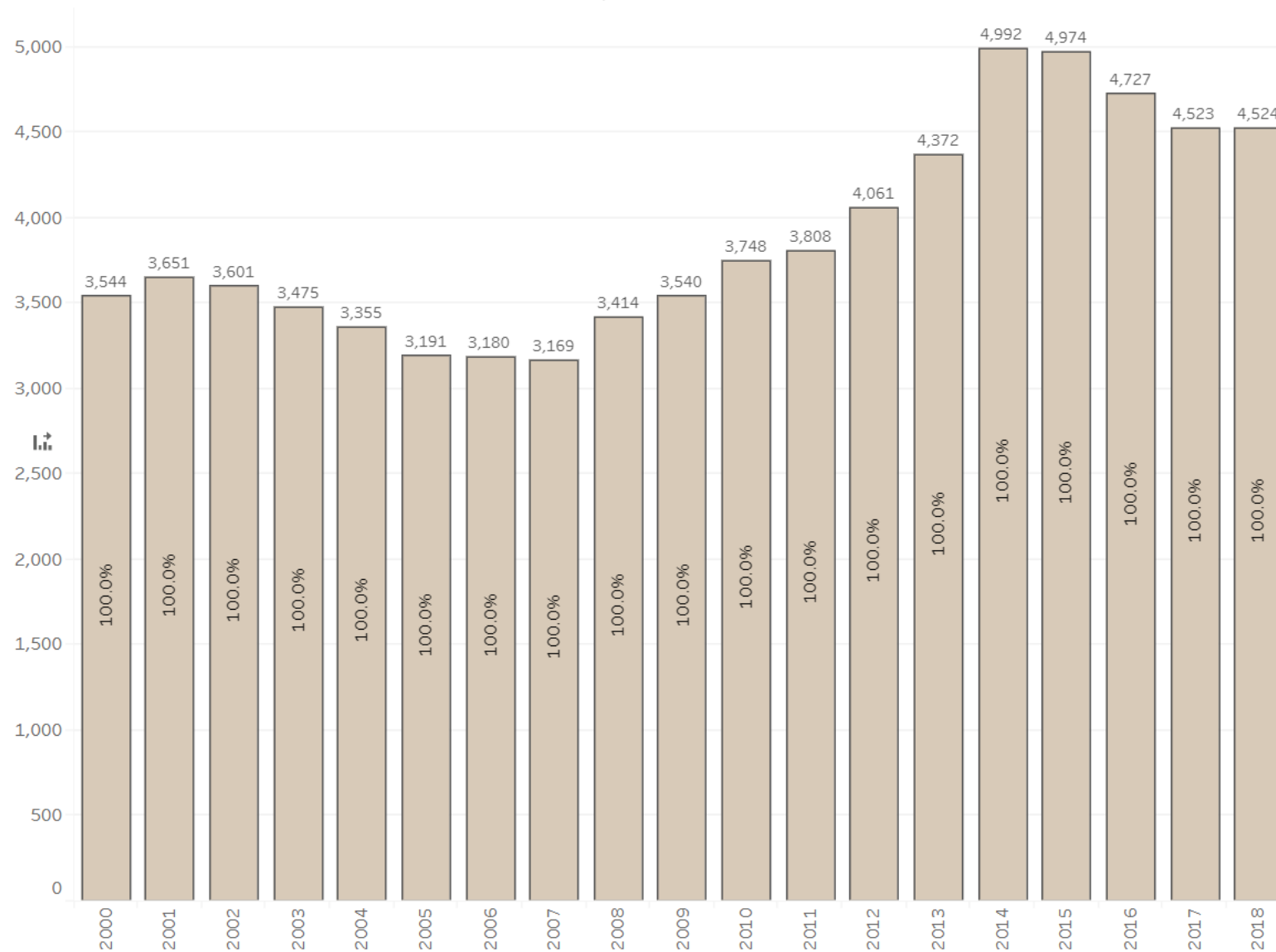


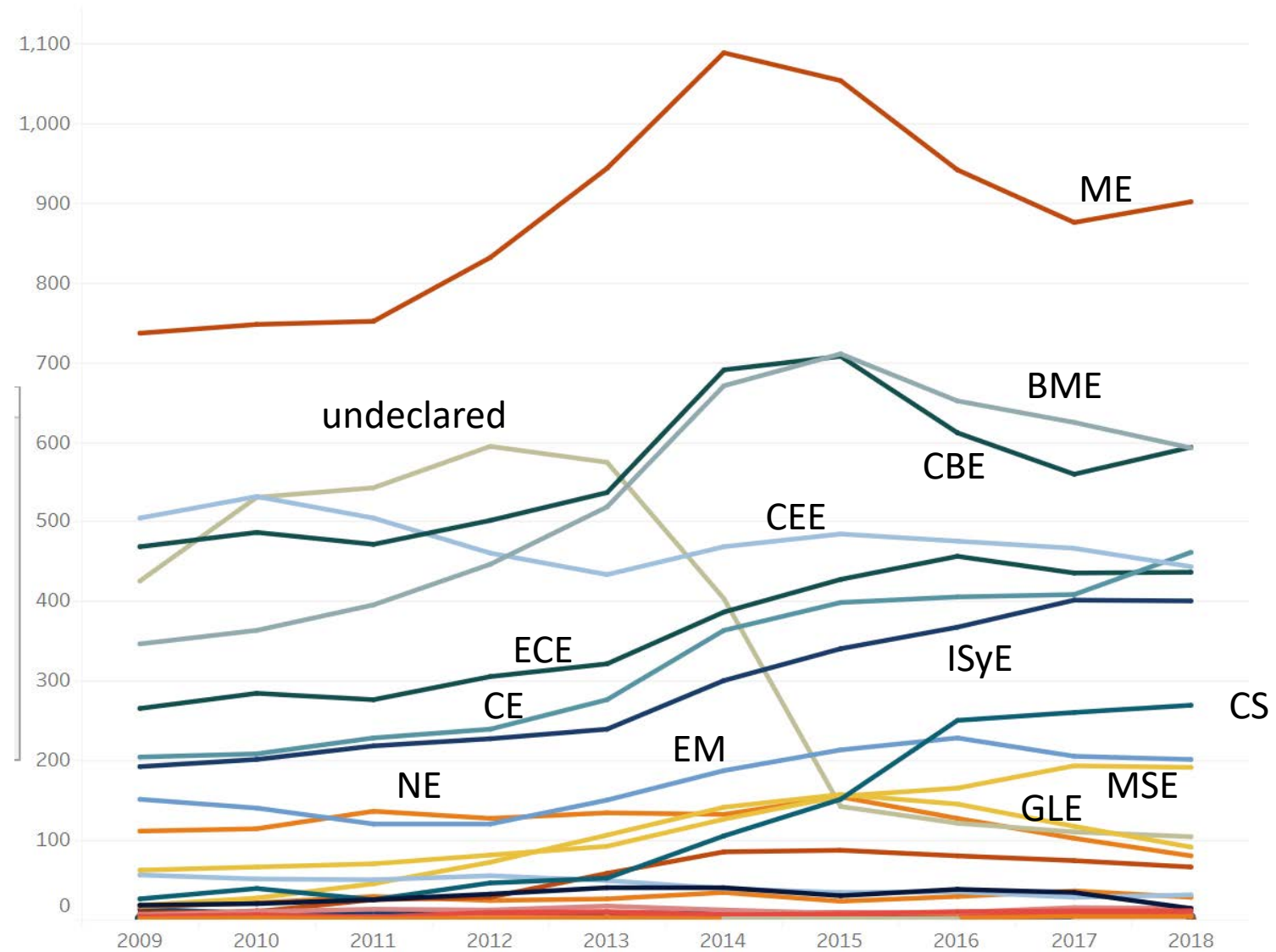
# Undergraduate Enrollment Trends

Spring 2019

# UG Enrollment History - CoE



# UG Enrollment by Major



# Why Grow?

- The State needs more engineers; demand exceeds supply
- Campus can increase proportion of non-res/res students if it admits the same number of res. This requires growth.
- Growth in CoE is advantageous because rate of return is better, as is student quality
- Campus will provide resources if we take more students. Resources can be used to accommodate more students, largely through
  - lab renovation
  - additional TAs
  - Additional lecturers
  - Additional faculty members
- Current plan is to increase to somewhere around 5,200-5,500 students in next 5 years.

# Controlling Enrollment

- We give admissions limits on number of new freshmen (by major)
- CBE, ME, CE, and BME are most constrained (can grow well beyond what we currently allow)
- Projections are complicated because we have sparse data
  - Direct admission is still pretty new
  - Unsure of progression rates
  - Unsure of number of students who choose to switch majors
  - Unsure of time-to-degree
- We also are asked to take some transfers each year (about 100 total, chosen in cooperation with department representatives)

# Sample Projection

Dept	Incoming Class of Fall 15	Enrollment Fall 17	Graduates 2017-18	Uniform Growth	Freshman Class for Primary Growth in Big 4	Total Enrollment for Primary Growth in Big 4	BS Degrees for Primary Growth in Big 4
<b>BME</b>	240	592	112	737	336	829	157
<b>CEE</b>	84	443	143	551	92	487	157
<b>CHE</b>	178	593	104	738	249	830	146
<b>CMPE</b>	95	461	76	574	133	645	106
<b>EE</b>	62	436	105	543	68	480	116
<b>EM</b>	50	201	56	250	50	201	56
<b>EP</b>	4	31	4	39	4	31	4
<b>GLE</b>	3	91	41	113	3	91	41
<b>IE</b>	43	400	104	498	47	440	114
<b>MSE</b>	21	191	49	238	23	210	54
<b>ME</b>	192	901	173	1121	269	1261	242
<b>NE</b>	24	80	19	100	24	80	19
<b>ENG</b>	141				141		
<b>Total</b>	1137	4420	986	5500	1440	5585.8	1212

# Tracking Cohorts

Department	Faculty Head Count	Freshman (Fall 2015 entry)	Total Fall15 Frosh Starting Here and Progressed (Starting Fall 2016)	Total Fall15 Frosh Progressed into Here (Starting Fall 2016)	Transfers (Internal and External)	Total Progressed (Starting Fall 2016)	Total Still Awaiting Progression	Sophomores	Total Fall15 Frosh Starting Here and Progressed (Starting Fall 2017)	Total Fall 15 Frosh Progressed into Here (Starting Fall 2017)	Cumulative Transfers (Internal and External)	Total Progressed (Starting Fall 2017)
BME	13	240	72	79	15	94	105	199	80	88	20	108
CBE	18	178	63	74	14	88	66	154	74	86	22	108
CEE/GLE	26	87	37	68	19	87	36	123	46	94	28	122
CE	6	95	38	55	7	62	39	101	43	66	17	83
EE	30	62	32	60	19	79	19	98	42	88	31	119
EP/NE/EM												
A	20	78	24	42	4	46	33	79	25	50	6	56
ISyE	18	43	20	59	13	72	15	87	22	92	19	111
ME	30	192	70	99	13	112	84	196	83	117	18	135
MSE	13	21	11	22	3	25	5	30	14	39	7	46
Undecided		141					51	51				
<b>TOTALS</b>	<b>174</b>	<b>1137</b>	<b>367</b>	<b>558</b>	<b>107</b>	<b>665</b>	<b>453</b>	<b>1118</b>	<b>429</b>	<b>720</b>	<b>168</b>	<b>888</b>

# Also... (2015 cohort)

	BME	CEE	CHE	CMPE	EE	EM	EP	GLE	IE	MSE	ME	NE	Did not progress in engineering	Movel to other UW-Madison major	Total
BME	80	9	4	2	7	4	1	1	17	4	10	0	10	91	240
CEE	0	40	0	1	0	0	0	2	2	1	1	1	5	26	79
CHE	3	8	73	4	3	1	0	2	10	16	5	1	10	42	178
CMPE	0	0	0	43	11	1	0	0	2	0	0	0	10	28	95
EE	0	0	1	6	42	2	0	0	1	0	1	0	2	7	62
EM	1	0	0	0	0	9	0	0	1	0	3	0	3	12	29
EP	0	0	0	0	0	1	5	0	0	0	0	1	0	6	13
GLE	0	0	0	0	0	0	0	6	0	0	0	0	0	2	8
IE	0	0	0	1	0	0	0	0	22	0	1	0	2	17	43
MSE	0	0	0	1	0	0	0	2	1	14	0	0	0	3	21
ME	2	6	1	2	10	1	1	1	16	0	83	1	18	50	192
NE	0	2	0	0	0	0	1	0	1	1	0	13	6	12	36
Undecided	2	10	6	6	15	7	0	5	19	3	13	1	7	47	141
Total													73	343	1137